

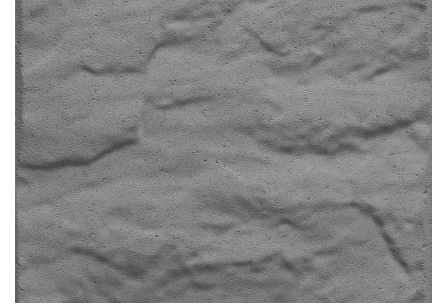
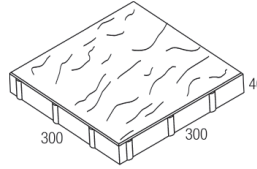
Product Data Sheet

Midland Brick

A BORAL COMPANY

MASONRY PAVER

Charcoal Stylestone Rockpave 300 Series 40mm



Product Information

Work Size (mm)	300 x 300 x 40
Dimensional Category	DPA2
CMAA Shape Category	Type C
Approximate Unit Weight (kg)	7.5
Approximate No. per m ²	11.1
No. Per Pack	224
Nominal Pack Weight (kg) ³	1730
Breaking Load (kN) ¹	>4
Mean Abrasion Index (V _a) ²	<15
Slip Resistance Category	P5
Cold Water Absorption (%)	<5
Coefficient of Contraction (mm/m)	<0.8
Durability Class	General Purpose
Potential to Effloresce	Slight to Moderate
Liability to Lime Pitting	Nil
Solar Absorption Rating	Dark

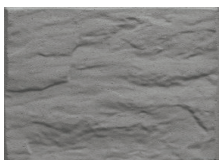
This technical information represents average properties obtained from production runs. If specific results are required, samples should be taken from current production runs. AS/NZS 4456 and 4586 are used as applicable. Durability classifications are based on product knowledge under local (Perth) climatic conditions. Colours are indicative only. Information subject to change without notice.

¹ At 28 days

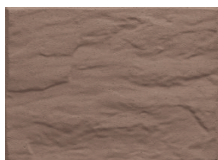
² At 90 days

³ Includes +3% for moisture

Stylestone Rockpave 300 Series 40mm Masonry Paver Range



Charcoal



Morocco



Sandstone



Wheat



Golden Sand



Steel Grey

Note: If you require specific or improved product specifications please contact your Sales Representative.

DISCLAIMER. The information presented herein is supplied in good faith and to the best of our knowledge was correct at the time of preparation. No responsibility can be accepted by Midland Brick Company Pty Ltd, its staff or its agents for any errors or omissions. Users are advised to make their own determination as to the suitability of this information in relation to their particular purposes and specific circumstances. Since the information contained in this document may be applied under conditions beyond our control, no responsibility can be accepted by Midland Brick Company Pty Ltd, its staff or its agents for any loss or damage caused by any person acting or refraining from action as a result of this information.

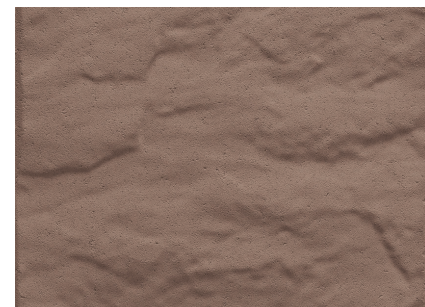
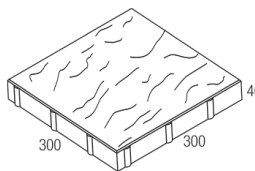
Product Data Sheet

Midland Brick

A BORAL COMPANY

MASONRY PAVER

Morocco Stylestone Rockpave 300 Series 40mm



Product Information

Work Size (mm)	300 x 300 x 40
Dimensional Category	DPA2
CMAA Shape Category	Type C
Approximate Unit Weight (kg)	7.6
Approximate No. per m ²	11.1
No. Per Pack	224
Nominal Pack Weight (kg) ³	1753
Breaking Load (kN) ¹	>4
Mean Abrasion Index (V _a) ²	<15
Slip Resistance Category	P5
Cold Water Absorption (%)	<5
Coefficient of Contraction (mm/m)	<0.8
Durability Class	General Purpose
Potential to Effloresce	Slight
Liability to Lime Pitting	Nil
Solar Absorption Rating	Dark

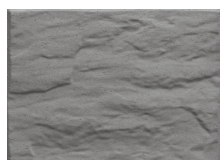
This technical information represents average properties obtained from production runs. If specific results are required, samples should be taken from current production runs. AS/NZS 4456 and 4586 are used as applicable. Durability classifications are based on product knowledge under local (Perth) climatic conditions. Colours are indicative only. Information subject to change without notice.

¹ At 28 days

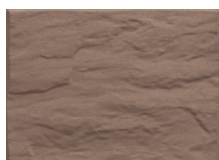
² At 90 days

³ Includes +3% for moisture

Stylestone Rockpave 300 Series 40mm Masonry Paver Range



Charcoal



Morocco



Sandstone



Wheat



Golden Sand



Steel Grey

Note: If you require specific or improved product specifications please contact your Sales Representative.

DISCLAIMER. The information presented herein is supplied in good faith and to the best of our knowledge was correct at the time of preparation. No responsibility can be accepted by Midland Brick Company Pty Ltd, its staff or its agents for any errors or omissions. Users are advised to make their own determination as to the suitability of this information in relation to their particular purposes and specific circumstances. Since the information contained in this document may be applied under conditions beyond our control, no responsibility can be accepted by Midland Brick Company Pty Ltd, its staff or its agents for any loss or damage caused by any person acting or refraining from action as a result of this information.

Product Data Sheet

Midland Brick

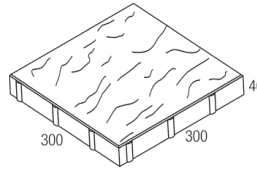
A BORAL COMPANY

MASONRY PAVER

Sandstone

Stylestone Rockpave 300

Series 40mm



Product Information

Work Size (mm)	300 x 300 x 40
Dimensional Category	DPA2
CMAA Shape Category	Type C
Approximate Unit Weight (kg)	7.6
Approximate No. per m ²	11.1
No. Per Pack	224
Nominal Pack Weight (kg) ³	1753
Breaking Load (kN) ¹	>4
Mean Abrasion Index (V _a) ²	<15
Slip Resistance Category	P5
Cold Water Absorption (%)	<5
Coefficient of Contraction (mm/m)	<0.8
Durability Class	General Purpose
Potential to Effloresce	Slight
Liability to Lime Pitting	Nil
Solar Absorption Rating	Light

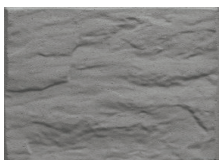
This technical information represents average properties obtained from production runs. If specific results are required, samples should be taken from current production runs. AS/NZS 4456 and 4586 are used as applicable. Durability classifications are based on product knowledge under local (Perth) climatic conditions. Colours are indicative only. Information subject to change without notice.

¹ At 28 days

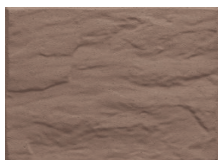
² At 90 days

³ Includes +3% for moisture

Stylestone Rockpave 300 Series 40mm Masonry Paver Range



Charcoal



Morocco



Sandstone



Wheat



Golden Sand



Steel Grey

Note: If you require specific or improved product specifications please contact your Sales Representative.

DISCLAIMER. The information presented herein is supplied in good faith and to the best of our knowledge was correct at the time of preparation. No responsibility can be accepted by Midland Brick Company Pty Ltd, its staff or its agents for any errors or omissions. Users are advised to make their own determination as to the suitability of this information in relation to their particular purposes and specific circumstances. Since the information contained in this document may be applied under conditions beyond our control, no responsibility can be accepted by Midland Brick Company Pty Ltd, its staff or its agents for any loss or damage caused by any person acting or refraining from action as a result of this information.

Product Data Sheet

Midland Brick

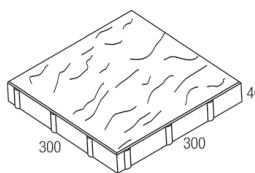
A BORAL COMPANY

MASONRY PAVER

Wheat

Stylestone Rockpave 300

Series 40mm



Product Information

Work Size (mm)	300 x 300 x 40
Dimensional Category	DPA2
CMAA Shape Category	Type C
Approximate Unit Weight (kg)	7.6
Approximate No. per m ²	11.1
No. Per Pack	224
Nominal Pack Weight (kg) ³	1753
Breaking Load (kN) ¹	>4
Mean Abrasion Index (V _a) ²	<15
Slip Resistance Category	P5
Cold Water Absorption (%)	<5
Coefficient of Contraction (mm/m)	<0.8
Durability Class	General Purpose
Potential to Effloresce	Slight
Liability to Lime Pitting	Nil
Solar Absorption Rating	Medium

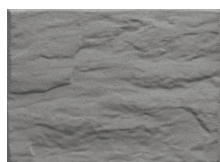
This technical information represents average properties obtained from production runs. If specific results are required, samples should be taken from current production runs. AS/NZS 4456 and 4586 are used as applicable. Durability classifications are based on product knowledge under local (Perth) climatic conditions. Colours are indicative only. Information subject to change without notice.

¹ At 28 days

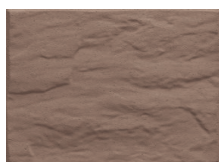
² At 90 days

³ Includes +3% for moisture

Stylestone Rockpave 300 Series 40mm Masonry Paver Range



Charcoal



Morocco



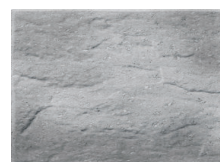
Sandstone



Wheat



Golden Sand



Steel Grey

Note: If you require specific or improved product specifications please contact your Sales Representative.

DISCLAIMER. The information presented herein is supplied in good faith and to the best of our knowledge was correct at the time of preparation. No responsibility can be accepted by Midland Brick Company Pty Ltd, its staff or its agents for any errors or omissions. Users are advised to make their own determination as to the suitability of this information in relation to their particular purposes and specific circumstances. Since the information contained in this document may be applied under conditions beyond our control, no responsibility can be accepted by Midland Brick Company Pty Ltd, its staff or its agents for any loss or damage caused by any person acting or refraining from action as a result of this information.

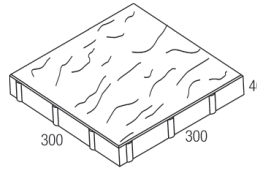
Product Data Sheet

Midland Brick

A BORAL COMPANY

MASONRY PAVER

Golden Sand Stylestone Rockpave 300 Series 40mm



Product Information

Work Size (mm)	300 x 300 x 40
Dimensional Category	DPA2
CMAA Shape Category	Type C
Approximate Unit Weight (kg)	7.5
Approximate No. per m ²	11.1
No. Per Pack	224
Nominal Pack Weight (kg) ³	1730
Breaking Load (kN) ¹	>4
Mean Abrasion Index (V _a) ²	<15
Slip Resistance Category	P5
Cold Water Absorption (%)	<5
Coefficient of Contraction (mm/m)	<0.8
Durability Class	General Purpose
Potential to Effloresce	Slight
Liability to Lime Pitting	Nil
Solar Absorption Rating	Light

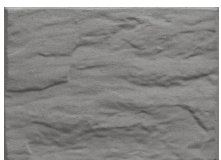
This technical information represents average properties obtained from production runs. If specific results are required, samples should be taken from current production runs. AS/NZS 4456 and 4586 are used as applicable. Durability classifications are based on product knowledge under local (Perth) climatic conditions. Colours are indicative only. Information subject to change without notice.

¹ At 28 days

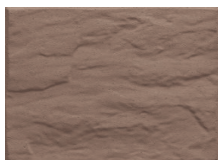
² At 90 days

³ Includes +3% for moisture

Stylestone Rockpave 300 Series 40mm Masonry Paver Range



Charcoal



Morocco



Sandstone



Wheat



Golden Sand



Steel Grey

Note: If you require specific or improved product specifications please contact your Sales Representative.

DISCLAIMER. The information presented herein is supplied in good faith and to the best of our knowledge was correct at the time of preparation. No responsibility can be accepted by Midland Brick Company Pty Ltd, its staff or its agents for any errors or omissions. Users are advised to make their own determination as to the suitability of this information in relation to their particular purposes and specific circumstances. Since the information contained in this document may be applied under conditions beyond our control, no responsibility can be accepted by Midland Brick Company Pty Ltd, its staff or its agents for any loss or damage caused by any person acting or refraining from action as a result of this information.

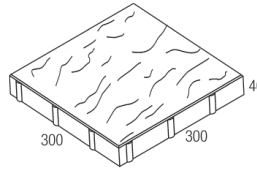
Product Data Sheet

Midland Brick

A BORAL COMPANY

MASONRY PAVER

Steel Grey Stylestone Rockpave 300 Series 40mm



Product Information

Work Size (mm)	300 x 300 x 40
Dimensional Category	DPA2
CMAA Shape Category	Type C
Approximate Unit Weight (kg)	7.6
Approximate No. per m ²	11.1
No. Per Pack	224
Nominal Pack Weight (kg) ³	1753
Breaking Load (kN) ¹	>4
Mean Abrasion Index (V _a) ²	<15
Slip Resistance Category	P5
Cold Water Absorption (%)	<5
Coefficient of Contraction (mm/m)	<0.8
Durability Class	General Purpose
Potential to Effloresce	Slight
Liability to Lime Pitting	Nil
Solar Absorption Rating	Medium to Dark

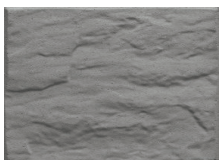
This technical information represents average properties obtained from production runs. If specific results are required, samples should be taken from current production runs. AS/NZS 4456 and 4586 are used as applicable. Durability classifications are based on product knowledge under local (Perth) climatic conditions. Colours are indicative only. Information subject to change without notice.

¹ At 28 days

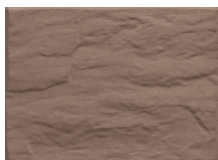
² At 90 days

³ Includes +3% for moisture

Stylestone Rockpave 300 Series 40mm Masonry Paver Range



Charcoal



Morocco



Sandstone



Wheat



Golden Sand



Steel Grey

Note: If you require specific or improved product specifications please contact your Sales Representative.

DISCLAIMER. The information presented herein is supplied in good faith and to the best of our knowledge was correct at the time of preparation. No responsibility can be accepted by Midland Brick Company Pty Ltd, its staff or its agents for any errors or omissions. Users are advised to make their own determination as to the suitability of this information in relation to their particular purposes and specific circumstances. Since the information contained in this document may be applied under conditions beyond our control, no responsibility can be accepted by Midland Brick Company Pty Ltd, its staff or its agents for any loss or damage caused by any person acting or refraining from action as a result of this information.